



The Education and Labour Market Linkage Platform (ELMLP)

The Data Horizon

Geoffrey Oliver, Director

Policy Research Analysis & Geomatics Division,
ESDC

Presented at: Canadian Research Data Centre
Network Webinar Series

November 15, 2018

Outline

- ❑ Recap
- ❑ Policy Context
- ❑ ESDC data activities & initiatives
- ❑ ESDC program administrative data
 - Files sent to Statistics Canada
 - Tax-linked files (potential ELMLP additions)
- ❑ ESDC's medium-term data landscape
- ❑ Possible longer-term ELMLP dataset additions
- ❑ Next Steps/Considerations



Recap . . .



What is the ELMLP? Where is it headed?



What has been done? What are the future research possibilities?



Expanding the ELMLP: A new culture of government & what can ESDC contribute

- Government of Canada (G of C) open data guidelines
- ESDC data strategy &
- New data sets: ESDC program administrative & other data



A new era of research & data development

- ❑ **Renewed focus on data & results**
 - Treasury Board Secretariat (TBS) guidelines (2014) for open data have laid the groundwork for modernizing ESDC's data governance policies & practices
 - “Open by default” philosophy – commitment to sharing data for public benefit, supporting citizen engagement & strengthening accountability

- ❑ A lot has happened since 2014 . . .
 - **Open Government Portal** launched (open.canada.ca)
 - **Directive on Open Government**
 - Requires departments and agencies to develop and publish plans for implementing Directive's requirements over five years
 - Canada hosted International **Open Data Conference** (2015)
 - Development of roadmap for enhanced global collaboration on open data

- ❑ Implications for data governance & research
 - Reinforced **data-driven policy & program decisions** for evidence-based policy-making
 - Expanded ability to **access & link data** (particularly at Statistics Canada)
 - Availability of new longitudinal data-sets & tax data linkages
 - New **opportunities for cross-pollination** (i.e. partnerships between government departments, academics, research firms, social enterprise institutions, etc.)
 - Continued commitment to world-leading data security & privacy standards



ESDC is an active player in the new data environment

ESDC's Chief Data Office is leading the implementation of a Departmental Data Strategy

- Improve ability to access & leverage data: greater use of open data; & expanded research/analysis capabilities (e.g. data management, governance & stewardship)

A strong foundation for using linked data (e.g. tax data) to assess program performance

- Evaluations/impact analyses using program data linked to tax files have been conducted for several programs
 - Youth - Career Focus, Skills Link
 - Grants & Loans - Canada Student Grants (CSG) & Canada Student Loans (CSLP)
 - Indigenous - Skills and Partnership Fund (SPF) & Indigenous Skills & Employment Strategy (ISET)
 - EI Part I & II - Skills Boost & Labour Market Development Agreements (LMDAs)

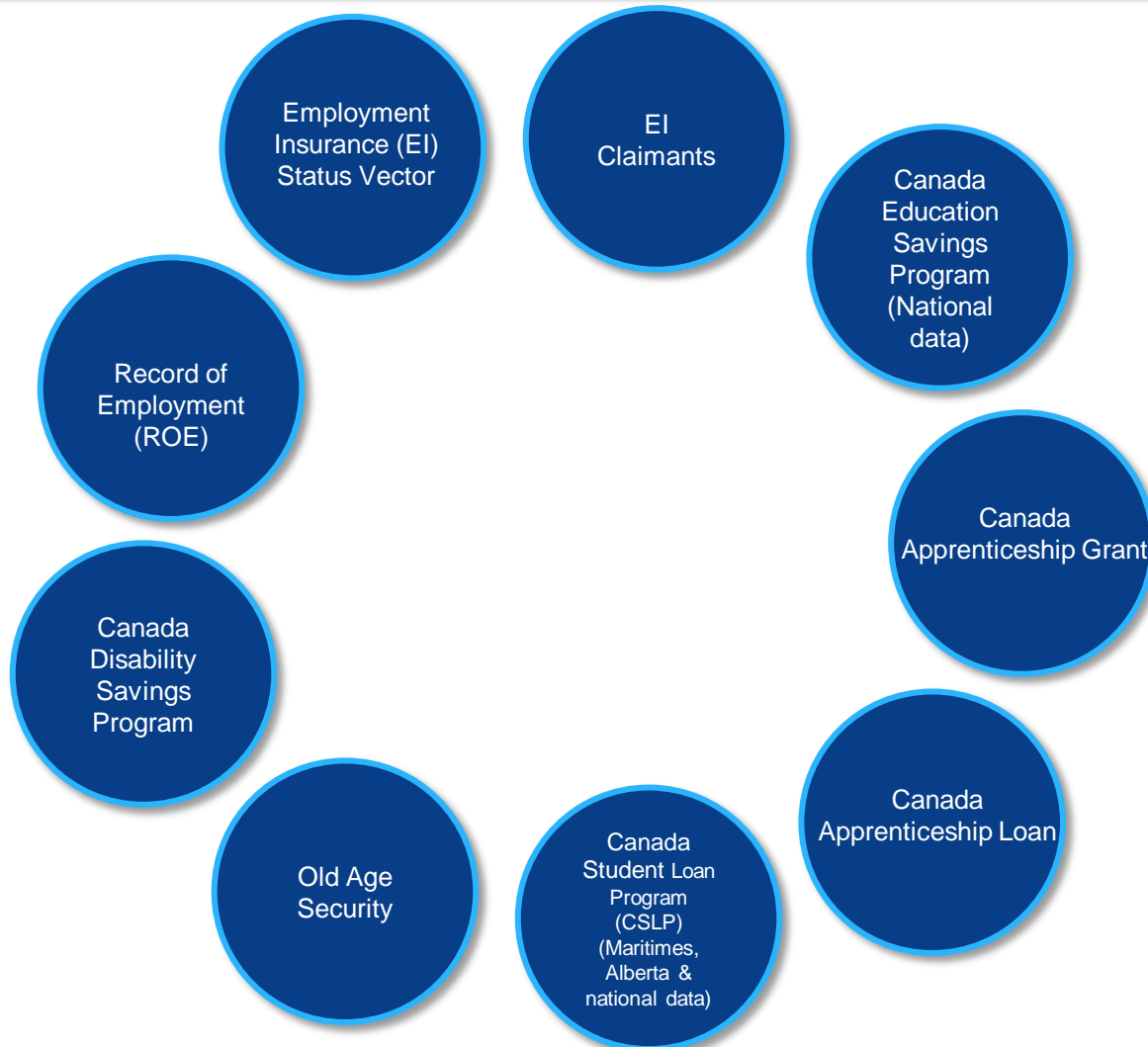
SEB Data Strategy & Interactive Data Mapping Platform

- Long-term vision of integrated data ecosystem – data rich; integrated & organized; secure & accessible; properly resourced
- Public-facing LMI portal - Dynamically pulls information from publically available labour market data sources; produces interactive maps and reports by socio-economic indicators
- Internal interface and tools via a common platform – geospatial tools, administrative “data lake” & business analytics tools (i.e. SAS, STATA, COGNOS, SPSS)



ESDC is 'data rich' . . .

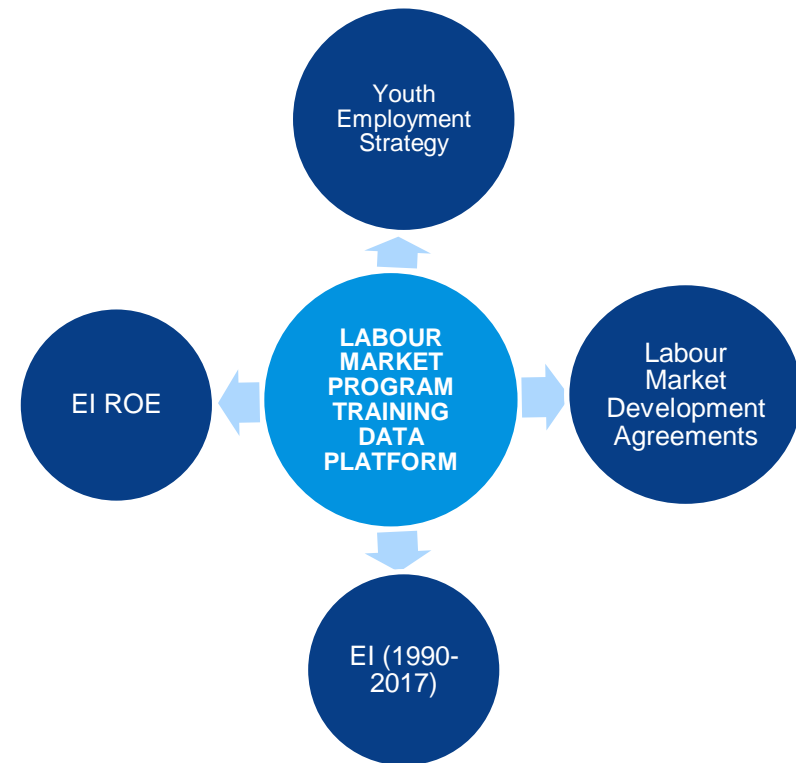
Many high value files already sent to Statistics Canada



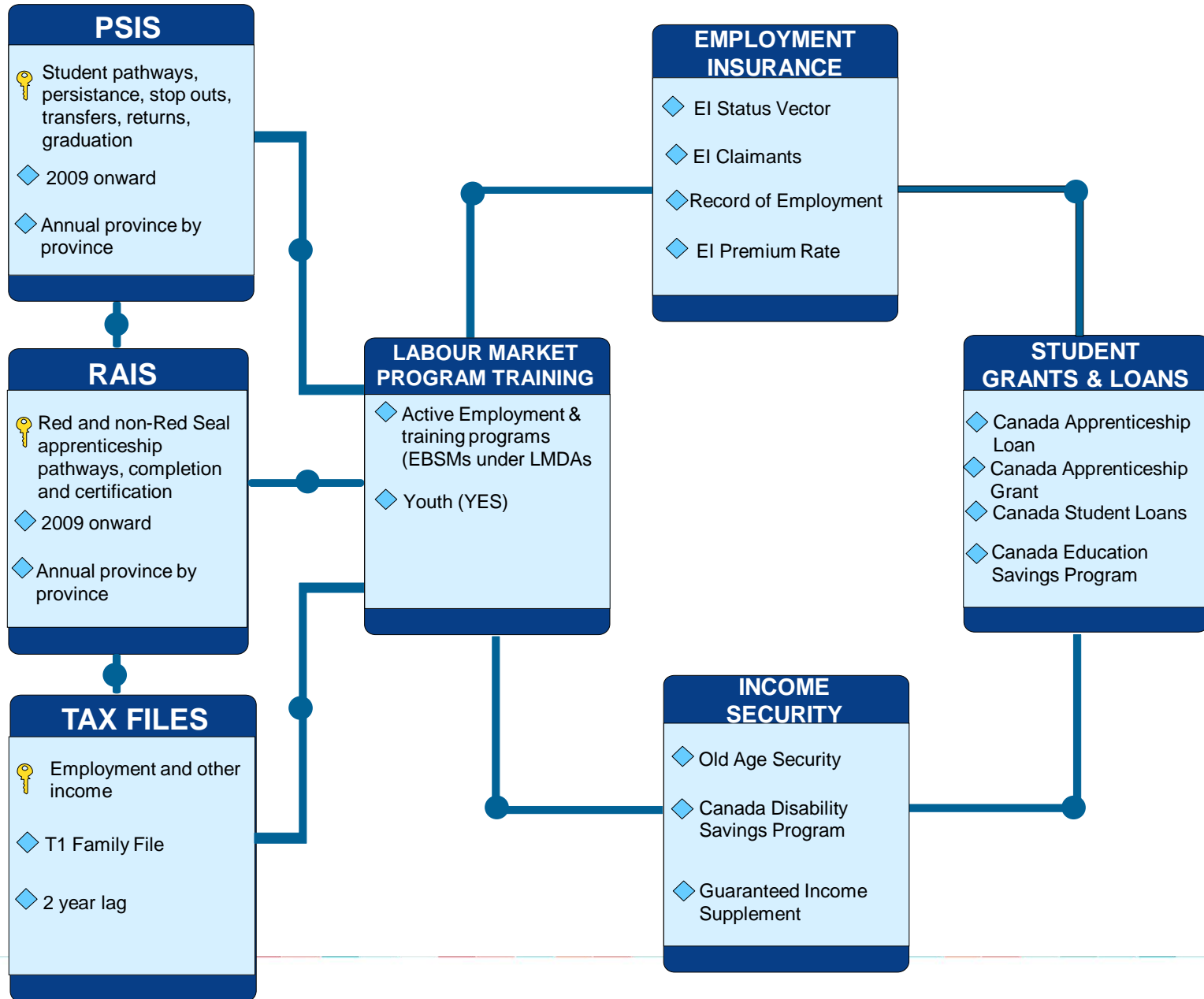
ESDC is 'data rich' (continued) . . .

Some program data holdings are already linked to tax records

- ❑ ESDC's Evaluation Directorate already uses tax-linked data.
 - Several tax-linked data sets from Statistics Canada & the Educational Policy Research Initiative (EPRI)
- ❑ **Labour Market Program Training Data (MTI) Platform** could be added to the existing ELMLP
 - Used to conduct impact analyses measuring program outcomes
 - Flexible – data can be linked using different keys
 - Data have been cleaned & linked to tax files
 - Population - all program participants since 1996 and a control group sample of non-participants
 - Tax records included: T1 (1996-2015); T4S (1996-2015); Canada Child Tax Benefit (2006-2015)



ESDC's medium-term data landscape . . .



ESDC is 'data rich' (continued) . . .

Other program data could be added in coming years, such as:

Apprenticeships

- Canada Apprentice Loans Program
- Apprenticeship Incentive Grant
- Apprenticeship Completion Grant
- Apprenticeship for Women Grant
- Pre-Apprenticeship Program

Youth

- Summer Work Experience Program
- Student Work-integrated Learning Program

Active Labour Market

- Job Bank
- Workforce Development Agreements
- Skills Boost Initiative (EI Part 1)

Next Steps/Considerations

Infrastructure is there, but how will data be selected and shared?

- ❑ Open input for providing ideas on priority datasets (other government departments, provinces/territories & academic researchers)
- ❑ Development of selection criteria & priority ranking to guide the data file transfer process
 - Policy priorities (ESDC & G of C *writ large*)
 - Data quality (e.g. cleaned or not, missing records, other gaps, etc.)
 - Privacy/data sensitivity issues (e.g. Indigenous peoples)
- ❑ ELMLP accessible at Statistics Canada Research Data Centres (RDCs) via a standard research proposal approval process



Questions?

